

# *NATIONAL YOUTH SHOW*

## *MILCH GOAT KNOWLEDGE MANUAL*

*2006*



## 1. Breeds and Characteristics

There are three main breeds of Milch Goats in South Africa viz;

1.1. The Saanen

1.2. The Toggenburg

1.3. The British Alpine

Of the three the Saanen is the most common in South Africa and most preferred by South African Milch Goat Farmers

## 2. Short history

### 2.1. The Saanen

The Saanen is a Swiss breed which originated in the Saanen Valley in the south of Canton Berne in Switzerland. It is a white goat, preferably with black pigmentation on the skin, the most visible of which appears as spots or patches on the udder, ears and nose or upper lip

- Full grown ewes weigh approximately 70 kg and fully grown rams weigh 90 – 100 kg
- Both ewes and rams have horns, but dehorning has become a common practice to avoid injuries and damage to fencing
- Beards are common in both ewes and rams but are not a necessary breed characteristic
- The Saanen is one of the highest producing breeds of Milch Goat and it is not unusual for a ewe to produce 1500kg – 2000kg during a lactation
- A Saanen ewe holds the World production record for 3506kg of milk produced during her 2<sup>nd</sup> lactation
- The average milk production that can be expected from a ewe is 900 – 1000kg per lactation
- The fact that the Saanen has such a good temperament makes it an ideal goat for a Goat Dairy business

### 2.2. The Toggenburg

The Toggenburg comes from Canton St Gallon in Switzerland. It is light brown in colour, with white stripes over the face, white lower legs and white around the tail

- Rams and sometimes ewes have beards and both have horns. It is common practice to dehorn.
- It is a little smaller than the Saanen. The ewes weigh an average of 60kg and the rams about 75kg
- Their milk production is also a little lower than the Saanen, but they remain an excellent milch goat as their butterfat and solids are of good quality.
- Due to the fact that it doesn't have the same good temperament as the Saanen, they are not usually the first choice for a large scale farming enterprise

### **2.3. The British Alpine**

This breed is from a single Swiss Ewe bred in Britain. The British Alpine has short, shiny black hair with characteristic white stripes on the face and lower legs with white around the tail

- The British Alpine is seen as hardier than the other breeds coming from Swiss origins. It is therefore better suited to less intensive operations

## **3. General Information**

The discussion that follows is generally appropriate to the Saanen breed because it is the most common Milch Goat in South Africa

### **3.1. Accommodation**

- a) It is well known that the Saanen Goats prefer dry weather, and don't enjoy wet, rainy, and windy weather
- b) It is for this reason that there needs to be adequate shelter provided so that the goats can stay dry during bad weather
- c) They need an open building with lots of fresh air, which offers shelter against the wind and rain. A typical goat shed will have walls of 1.6m to 2m high with a roof that rests on metal or wooden struts that are 3-3½ m high
- d) Lack of adequate shelter and exposure to wind and rain will result in an unhappy animal and a decrease in milk production
- e) The following factors should be taken into account when building a shelter
  - There should be no draughts
  - Good ventilation
  - Not too cold or too warm
  - A clean and hygienic environment

### **3.2 Bedding**

- a) There should be enough bedding on the floor as goats are naturally clean animals
- b) Experience tells us that hay is good bedding, but shavings can be used as well
- c) Apart from the shelter there needs to be a camp where the goats can graze freely and get exercise and fresh air
- d) Goats are inquisitive and therefore the fencing needs to be sturdy. A strand of electric fence can assist in keeping them in the camp

### **3.3 Nutrition**

- a) In an intensive operation, the goats should get about 2.5kg of Protein concentrate (14 – 16%) in the form of meal or pellets
- b) The goats also need 2.5 – 4kg of Lucerne as roughage
- c) Please note that pellets are better as the meal can cause blockage of the nostrils
- d) There needs to be a constant supply of cool drinking water available. Goats drink 4 – 18 litres per day depending on the weather, type of feed etc. it is important to remember that a goat needs 1,5 litres of water to produce 1kg of milk. This shows us that a shortage of water will have a negative effect on the milk production

### 3.4 Breeding

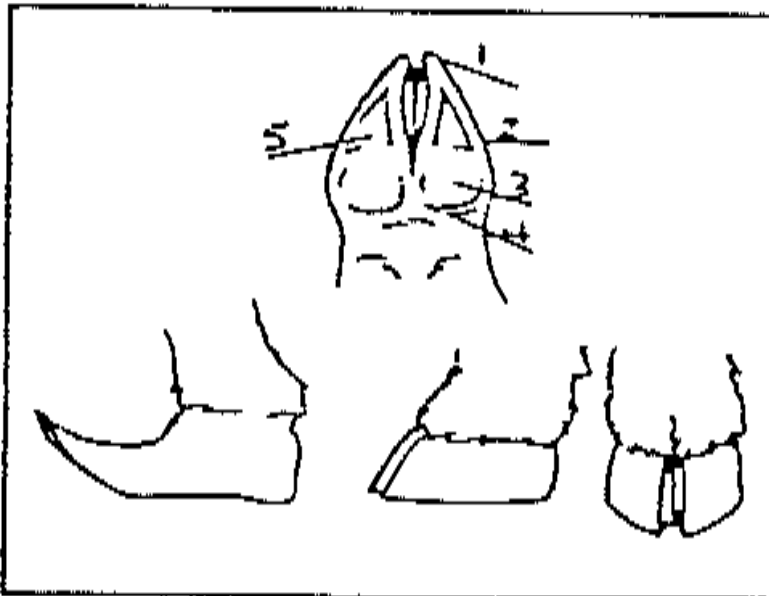
- a) The breeding is seasonal and they conceive in autumn, from February to April.
- b) The gestation period is 150 days and in South Africa the ewes give birth in August and September, sometimes in early October
- c) It is normal if a ewe has more than one kid, and twins are the rule rather than the exception
- d) It is important that the kids drink within 2 hours of birth, because the milk produced in the first few days after birth is rich in fats, protein, and antibodies. These antibodies stimulate the immune system of the kid. Without this the kid will weaken and die

### 3.5 Basic Herd Health

#### a) Foot Care

It is extremely important that the overgrowth on the hooves is trimmed every two months. A milch goat's hooves need, like a human fingernail, to be assessed and trimmed every 6 weeks to 2 months. Trim the hooves into the same shape as that of a newborn kid. Follow these steps:

- Bind the animal securely
- Clean the hoof well
- Trim the edges of the hoof until even with the sole
- Trim the heel



1. Toe
2. Edge
3. Sole
4. Heel
5. Scrape out dirt

- b) If the hooves are neglected, it can result in the goat becoming lame and getting hoof infections
- c) Please note that goats are not bound like sheep to trim their hooves. They are trimmed in a standing position, much like a horse.

### **3.6 Internal Parasites**

Goats need to be dewormed at least twice a year. Ask your vet's advice about the deworming programme in your area

### **3.7 External Parasites**

In areas where there are a lot ticks, goats need to be regularly dipped or sprayed

### **3.8 Mastitis**

- a) Mastitis or infection of the udder is a very common disease, and good preventative measures should be taken to ensure that the entire herd does not become infected
- b) To prevent mastitis, the following should be done:
  - Check the udder daily for abnormal discharges
  - Use recommended teat dip after milking
  - Maintain strong hygienic habits
  - Wipe the udder clean with a cloth or paper towel before milking

### **3.9 Other Diseases which can be inoculated against**

- Pasteurella
- Blue Udder
- Pulpy kidney
- Contagious Abortion (Brucellosis)

## **4 OTHER FACTS**

- a) A milch goat lives 7 – 10 years
- b) A goat is a ruminant, which means they chew their cud after regurgitating it back into the mouth
- c) Goats are milked twice a day as close to 12 hours apart as possible
- d) The milch goat was one of the first animals domesticated by man, and has provided him without shelter covering, food and clothing for close on 7000 years
- e) Due to its being a multi purpose animal and its temperament, the goat has been providing milk and milk products to man for longer than any other animal
- f) A Goats age can be determined by looking at the 8 teeth in the lower jaw as below

First year (kid)

All teeth are small and sharp. They will gradually be replaced by larger, permanent teeth, and this process is used to help determine the age of the goat.



Second year (yearling)

The goat loses the two middle front teeth when it is around 12 months old, and they are replaced by larger, permanent teeth.



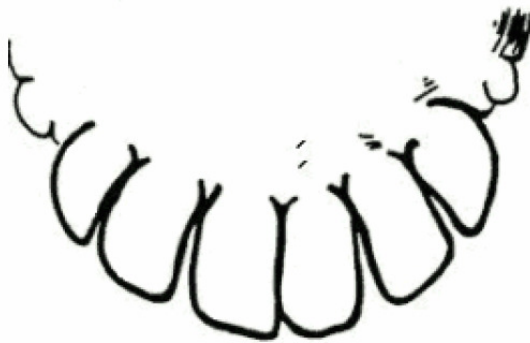
Third year (2-3 year-old)

The teeth next to the middle pair are replaced by permanent teeth when the goat is about 24 months old.



Fourth year (4 year-old)

The goat now has six permanent teeth, with only one pair of kid teeth remaining.



Fifth year (4 year-old and over)

The set of 8 front teeth is complete. The age of the goat beyond 5 years must be guessed at from the amount of wear on the teeth. This is very variable, and diet has a big effect. Goats on a rough, coarse diet will grind their teeth away faster than does on an easily eaten diet. Does grazing on rough pasture will show considerable wear sooner than barn-fed does on a better quality ration. Teeth spread, loosen and finally drop out as the goat ages.



## **Preparation for the show**

### **1.1 Nutrition**

An animal in poor condition is not a good advertisement for the farmer. Due to the fact that feeding animals for a show is expensive, the farmer should choose phenotypically correct animals that conform to the breed standards. The feed and balanced rations should begin  $\pm$  5 months before the show

### **1.2 Preparation of the animal**

This process should be done on the farm where the animal is used to the surroundings. At a show there are strange noises, animals and people which added to the transport to the show, can stress the animal. Prevent any additional stress as this can cause the loss of the kid in a pregnant animal

#### **Horns**

These must be sanded smoothly. Furniture oil can be used just before judging for further finishing off

#### **Washing**

Wash the animal with a soapy mixture that is not too strong to avoid irritation of the skin. Let the animal dry off in the sun.

<b>NB Don't wash off the wax layer in the ears. It forms a natural protection</b>
---

#### **Feet**

Hooves should be trimmed neatly as well as the hair around the hoof so that it looks neatly finished off

## **PRODUCTS:**

### **GOAT'S MILK:**

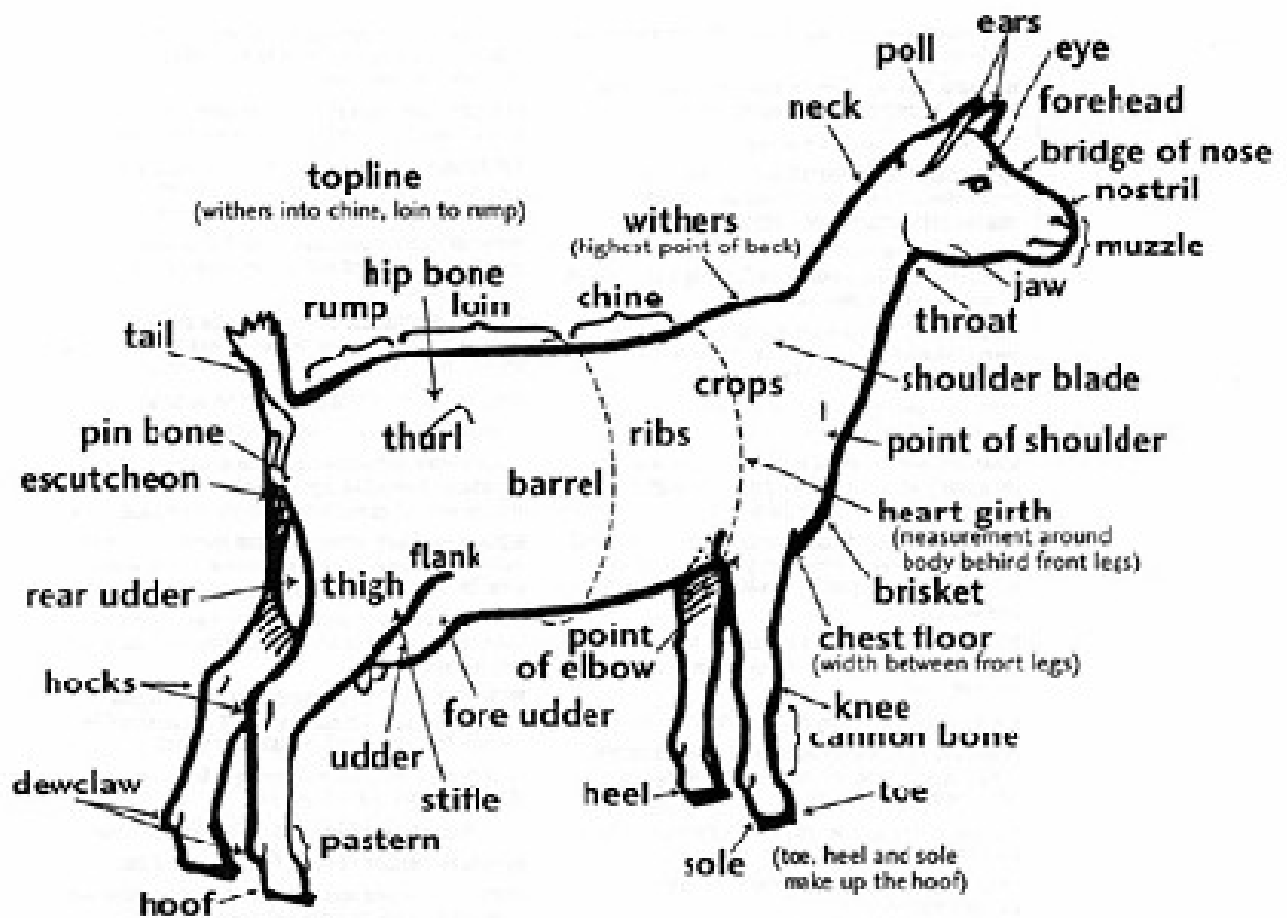
The reasons why people drink goat's milk:

- Allergies to other milk products
- Goat's milk is more easily digestible
- People like a variety in taste

### **OTHER PRODUCTS MADE FROM GOATS MILK**

- Powdered milk
- Butter
- Ice cream
- Yoghurt
- Cheese

## PARTS OF A MILCH GOAT



## **WASHING AND PREPARATION**

You will need:

- Medium scissors
  - Small scissors
  - File
  - Towel
  - Washcloth
  - Shampoo
  - Small cloth
  - Raw Linseed Oil
  - Sand paper
  - Hoof shears or pruning shears
  - Halter or nylon rope
  - Brush
  - Bucket
- 
- a) Tie up the goat securely – relatively short and fill bucket with water
  - b) Attach the hose pipe and open the tap, the stream must be steady but not too hard
  - c) Start to wet the goat from behind the head over the body and legs
  - d) Apply shampoo from behind the head to the rump. Remember that the face and ears may not come into contact with the water or the shampoo. The chemicals in the shampoo may burn the eyes, nose and mouth.
  - e) Start washing the goat on the left hand side over the back to tail. Use your hands to rub in the shampoo. Now wash on the right side to in front of the chest. Wash against the grain of the hair
  - f) The belly is washed last as all the dirt runs of into this area. Lastly wash the legs and scrub the hooves with the brush
  - g) Take the hosepipe and rinse off all the soap. Spray against the grain of the hair. Remember that no foam may remain, especially on the belly and legs
  - h) Take the brush and brush the hair evenly from front to back
  - i) Dry off with the towel
  - j) Take the washcloth, make it damp and wipe off the face, around the mouth, nostrils and eye sockets. Use the washcloth to gently wipe the ears without disturbing the wax layer

### **PREPARATION:**

The goat is now dry.

- a) Use the medium scissors and cut off the beard under the mouth
- b) Trim tail hairs on both sides of the tail for  $\pm 1$  cm from the skin. Do not cut off the tip of the tail.

- c) Use the small scissors to trim the hairs around the mouth and ears and inside the ears
- d) Trim the hooves evenly with the hoof shears
- e) Trim the hair around the hooves and smear the hooves with Linseed oil with the small cloth
- f) Using a dry brush, brush the hair evenly from front to back

## **SHOWMANSHIP**

The idea is to show the animal to its best advantage, as if you were at a normal show. The only difference is that at the youth show, the handler is being judged, and not the animal. All animals are handled more or less according to the breed standards

The following must be remembered when entering the ring:

- a) Concentrate and forget everyone outside the ring
- b) Keep eye contact with the judge
- c) Never move between the judge and the animal
- d) You and the animal must be neat and tidy. No straw or dirt on the animal, and gumboots must be clean
- e) Come into the ring on the left side of the goat, with your right hand on the chain
- f) Don't walk too quickly and if your goat doesn't walk forward, pull gently on the chain to get it moving.
- g) Move in a clockwise direction until asked to stand by the ring steward or judge. Stay on the left side of the goat and do not cut the corners in the ring.
- h) When asked to stand, make sure the goat is standing correctly with the front legs square, and the back legs either square and slightly to the rear, or with the right leg slightly further back to show the udder.
- i) When you are satisfied that everything is right, stand with your face towards the judge at the goat's left shoulder and look up.
- j) The judge will now ask you to move your goat. Turn to left and right etc. Use your chain to pull the goat straight. Check every time that the legs are positioned correctly.
- k) You will now have to move around the ring again. The ring steward will ask you to stand on the opposite side from the judge with your back facing him, and the goat facing forward.
- l) If the judge stands in the middle behind you, you must switch from the middle and stand on the right hand side.
- m) You will now be asked to bring your goat to the judge and stop. Thereafter, you must move to the middle of the ring, show your goat and then return to your place.
- n) Do everything with concentration so that you do not end up between the judge and the animal. You may switch sides if necessary.
- o) Stop about 1 meter from the judge. Position the legs and look up. When the judge gives you the sign, turn around and go to the middle of the ring with your goat at an angle, and its head to the right of the judge. Position the legs and look up. At the judge's sign, return to your place in the line, position the legs and look up. You will

now all be asked to move around the ring until the ring steward indicates you to stand still. Position the legs

- p) If the judge asks you to open the goat's mouth, use your left hand thumb and forefinger, turn the head towards the judge and use the fingers to separate the lips and show the teeth
- q) Learn to tell the different ages of the goats, as you will be asked to age the animal

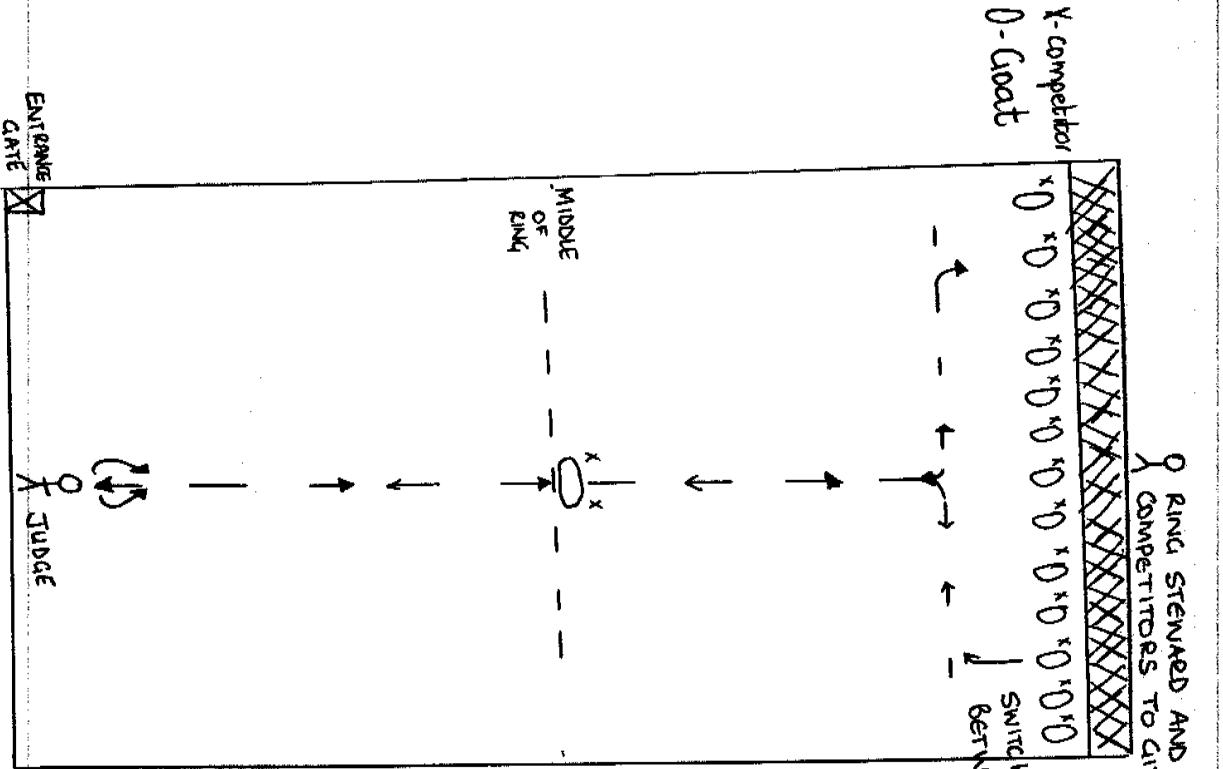
## **MILCH GOAT GROUPS**

- a) There are three participants in each group. Arrange them in order of height. Shortest to tallest, or tallest to shortest. The person in the middle gives the signs. Groups of the same sex are preferable but mixed groups are allowed
- b) With groups, co-operation and uniformity is very important
- c) Clothes and shoes must be the same. Watches off, and girls must have the same hair elastics. Belts must be the same. Clothes must be neat
- d) Enter the ring clockwise, with your right hand on the chain.
- e) Move in a clockwise direction around the ring, maintain eye contact and the spaces between the group members, and do not cut the corners.
- f) Position the feet correctly, wait for the last person to be ready, give the sign and look up. Remember the goats must stand in the same position, and you should be standing at an angle opposite the goat's left shoulder.
- g) The judge will now ask you to turn your goats, backwards, forwards, and left and right
- h) Do everything at the same time and quickly. Remember to keep the spacing between you and the railing behind you.
- i) Use the chain to move the goat into the right position
- j) Position the legs correctly and look up together
- k) You will now have to move around the ring again. The ring steward will ask you to stand on the opposite side from the judge with your back facing him, and the goat facing forward.
- l) From the middle everyone must switch and stand on the right of the goat.
- m) You will now be asked to bring your goat to the judge and stop. Thereafter, you must move to the middle of the ring, show your goat and then return to your place.
- n) Do everything with concentration so that you do not end up between the judge and the animal. You may switch sides if necessary.
- o) Stop about 1 meter from the judge. Position the legs and look up. When the judge gives you the sign, turn around and go to the middle of the ring with your goat at an angle, and its head to the right of the judge. Position the legs and look up.
- p) At the judge's sign, return to your place in the line, position the legs and look up.
- q) You will now all be asked to move around the ring until the ring steward indicates you to stand still. Position the legs

## Criteria for showing a Milch Goat

Criteria	0	1	2	3	Comments
Neatness of the handler					
Neatness of the animal					
Concentration					
Speed of movement – not too slowly					
Instructions carried out correctly					
Correct lines					
Maintaining eye contact with judge and animal					
Correct spacing between animals and railing					
Cutting corners or not					
General Impression					
Total					

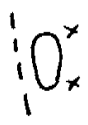
# FIGURE AND LINE ILLUSTRATIONS



RING STEWARDED AND SPACE IN FRONT OF COMPETITORS TO GIVE INSTRUCTIONS AND INDICATE NEXT COMPETITOR

SWITCH BETWEEN YOU AND JUDGE

1. STRAIGHT LINES
2. THE JUDGE STANDS IN ONE PLACE
3. THE COMPETITOR MUST HAVE IMAGINARY LINES

  
 SHOWING COAT TO JUDGE IN THE MIDDLE OF RING  
 NO MARKS TO INDICATE MIDDLE

EXAMPLE OF RING AND MOVEMENTS

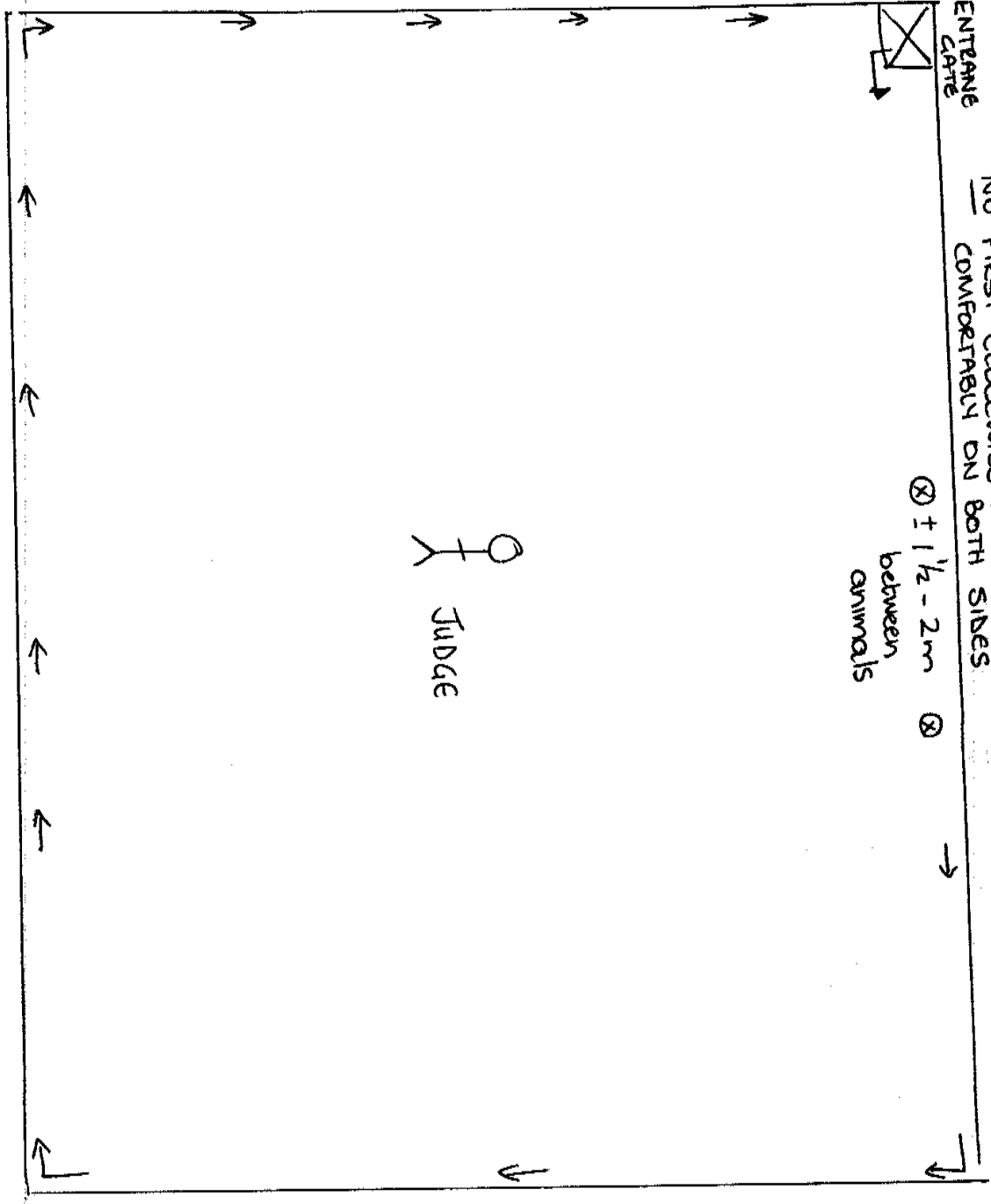
ENTRANCE  
GATE



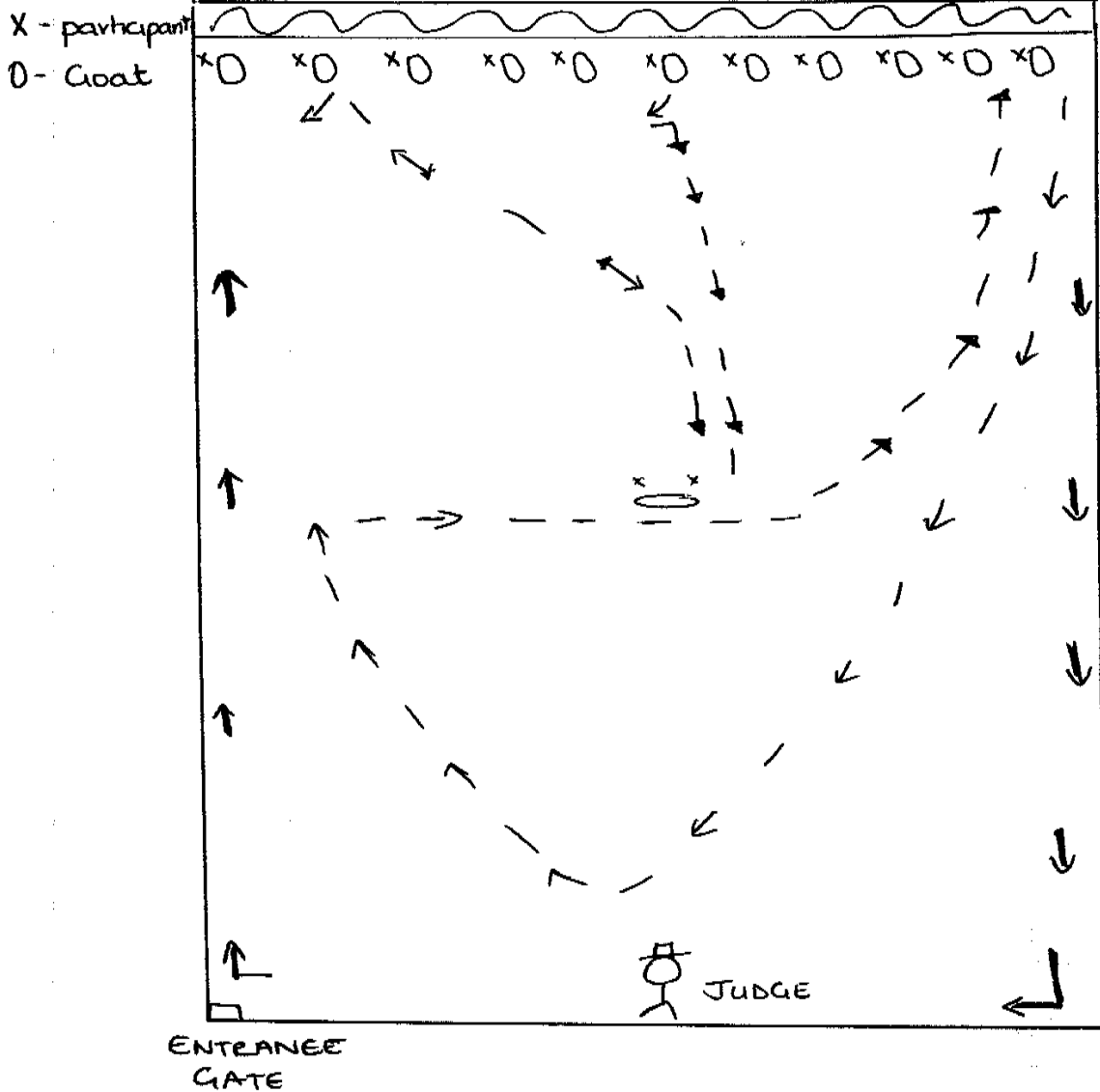
NB FIRST CLOCCWISE AND THEN ANTI-CLOCCWISE TO CHECK IF GOAT MOVES  
COMFORTABLY ON BOTH SIDES

⊗ ± 1 1/2 - 2m ⊗  
between  
animals

JUDGE



# EXAMPLE OF INCORRECT LINES



↑ - DIRECTION BEFORE TAKING POSITION